

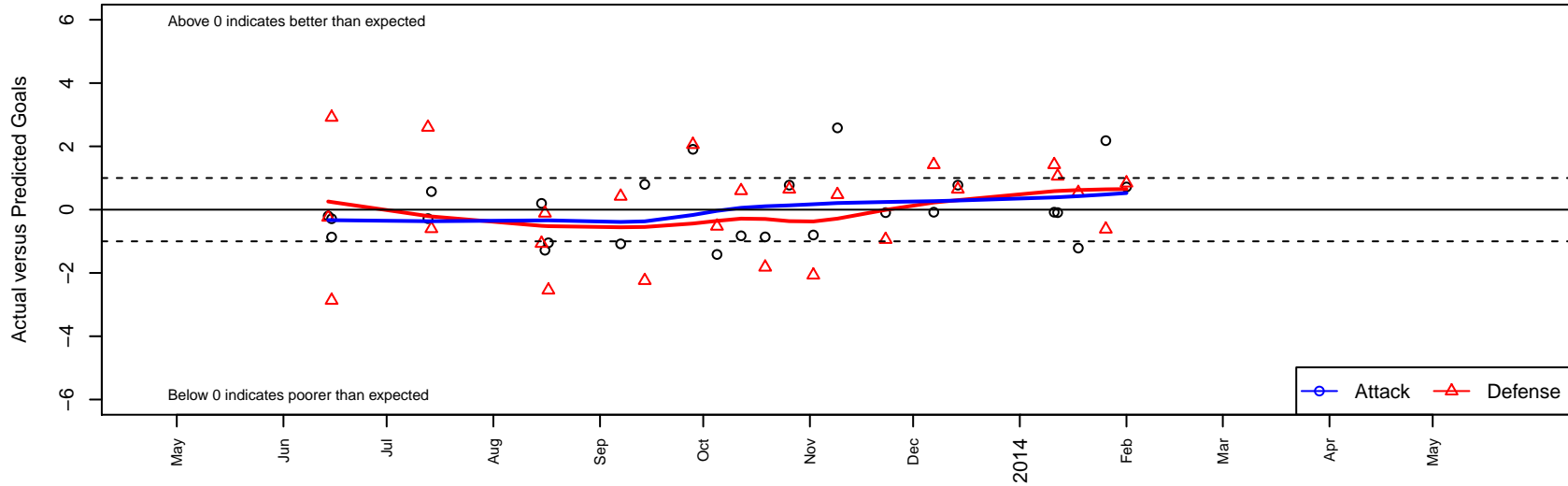
Seattle United NE Blue G01

Seattle United Regional
 Seattle, WA
 G01 total strength=403
 attack=0.31 defense=0.21
 fall league = NPSL G12D2
 alt names used:
 Seattle United NE Blue G01
 Seattle United G01 NE Blue

Venues played:
 Shoreline Classic GU12-13 Silver
 Seattle Cup GU12
 Bigfoot Silver 1 U12
 NPSL G12D2
 Founders Cup G01



Seattle United NE Blue G01
 Dots are actual minus expected GF (blue circles) and GA (red triangles).
 Blue line is smoothed change in attack strength. Red is smoothed change in defense strength.



	date	home		away		venue	pred.home	pred.away
6985	2014-02-01	NSC Velocity G01	3	Seattle United NE Blue G01	1	Founders Cup G01	3.84	0.28
6974	2014-01-26	MIFC Thunder G01	2	Seattle United NE Blue G01	4	Founders Cup G01	1.38	1.82
6905	2014-01-18	Seattle United NE Blue G01	1	Norpoint FC Puma Cats G01	0	Founders Cup G01	2.21	0.54
6891	2014-01-12	Seattle United NE Blue G01	1	Kent United White G01	2	Founders Cup G01	1.09	3.06
6867	2014-01-11	FC Edmonds Elite G01	0	Seattle United NE Blue G01	1	Founders Cup G01	1.42	1.08
6841	2013-12-14	Seattle United NE Blue G01	2	SCORE Patriots Blue G01	0	NPSL G12D2	1.22	0.65
6819	2013-12-07	Seattle United NE Blue G01	1	FC Edmonds Elite G01	0	NPSL G12D2	1.08	1.42
6671	2013-11-23	Kent United White G01	4	Seattle United NE Blue G01	1	NPSL G12D2	3.06	1.09
6480	2013-11-09	Seattle United NE Blue G01	4	ISC Arsenal Red G01	0	NPSL G12D2	1.41	0.48
6339	2013-11-02	NSC Reign G01	4	Seattle United NE Blue G01	0	NPSL G12D2	1.93	0.80
6184	2013-10-26	SCORE Patriots Blue G01	0	Seattle United NE Blue G01	2	NPSL G12D2	0.65	1.22
6024	2013-10-19	Seattle United NE Blue G01	0	BIFC Blue G01	3	NPSL G12D2	0.86	1.18
5863	2013-10-12	Seattle United NE Blue G01	0	North Whidbey Islanders G01	1	NPSL G12D2	0.83	1.60
5679	2013-10-05	ISC Arsenal Red G01	1	Seattle United NE Blue G01	0	NPSL G12D2	0.48	1.41
5508	2013-09-28	Seattle United NE Blue G01	3	Kent United White G01	1	NPSL G12D2	1.09	3.06
5204	2013-09-14	Seattle United Shoreline Blue G01	4	Seattle United NE Blue G01	2	NPSL G12D2	1.76	1.20
5050	2013-09-07	FC Edmonds Elite G01	1	Seattle United NE Blue G01	0	NPSL G12D2	1.42	1.08
4748	2013-08-17	Seattle United NE Blue G01	0	Snohomish United Red G01	5	Bigfoot Silver 1 U12	1.05	2.46
4709	2013-08-16	BYSC Select Wolverines G01	1	Seattle United NE Blue G01	3	Bigfoot Silver 1 U12	0.89	4.28
4698	2013-08-15	NSC Reign G01	3	Seattle United NE Blue G01	1	Bigfoot Silver 1 U12	1.93	0.80
4195	2013-07-14	Seattle United NE Blue G01	2	Wenatchee Fire White G01	2	Seattle Cup GU12	1.43	1.40
4174	2013-07-13	Seattle United NE Blue G01	0	BSC Portland Black G01	4	Seattle Cup GU12	0.28	6.60
7959	2013-06-15	Seattle United NE Blue G01	0	MIFC Maroon G00	5	Shoreline Classic GU12-13 Silver	0.29	7.92
7963	2013-06-15	Seattle United NE Blue G01	0	Seattle United NE White G00	6	Shoreline Classic GU12-13 Silver	0.87	3.13
7930	2013-06-14	Seattle United Shoreline Blue G01	2	Seattle United NE Blue G01	1	Shoreline Classic GU12-13 Silver	1.76	1.20